



Harford Street, London, E1

BUTLER & STAG



Available from 30th June 2023

A beautiful top floor city apartment within 0.2 Miles from Mile End Station and all amenities, this apartment is the perfect dwelling for city living.



- Top Floor Apartment
- Modern Décor
- Views Over The Shard
- 0.2 Miles From Mile End Station
- One Bedroom
- Private Balcony
- Available 30th June 2023
- Long Term Let

Offered with a 30th June move in, is this top floor apartment which benefits from a modern internal décor and expansive light.

The property is complimented with a private balcony with views over towards the Shard and the city skyline.

A double bedroom, fitted kitchen and bathroom make this a perfect property for those wanting to be located in a vibrant area with Restaurants, Cafes and bars within walking distance.

Transport is located nearby with Mile End underground station being within 0.2 miles away and all bus routes into London available.

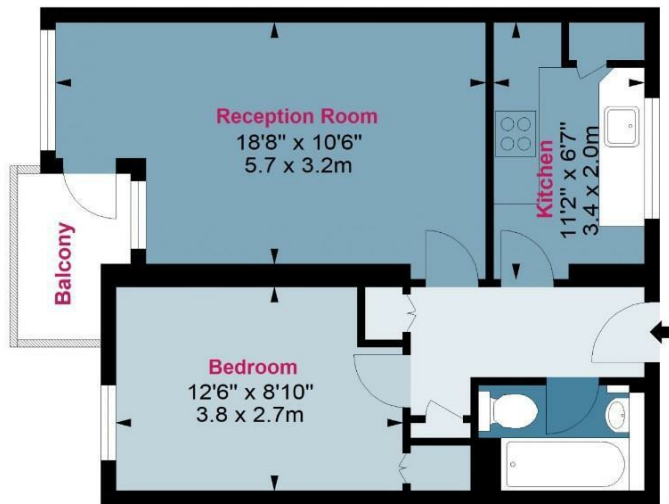




Galveston House Harford Street, E1

Approx. Gross Internal Area 475 Sq Ft - 44.13 Sq M (Excluding Balcony)
Approx. Gross Internal Area 507 Sq Ft - 47.10 Sq M (Including Balcony)

BUTLER & STAG



Fifth Floor

Floor Area 475 Sq Ft - 44.13 Sq M

Floor plan is for illustrative purposes only and is not to scale. Every attempt has been made to ensure the accuracy of the floor plan shown, however all measurements, fixtures, fittings and data shown are an approximate interpretation for illustrative purposes only.
lpaplus.com

IMPORTANT NOTICE - These particulars have been prepared in good faith and they are not intended to constitute part of an offer or contract. We have not performed a structural survey on this property and the services, appliances and specific fittings have not been tested. All photographs, measurements, floor plans and distances referred to are given as a guide and should not be relied upon.

BUTLER & STAG

☎ 020 8102 1236

🏠 508 Roman Road, Bow, London, E3 5LU

✉ bow@butlerandstag.com

www.butlerandstag.uk